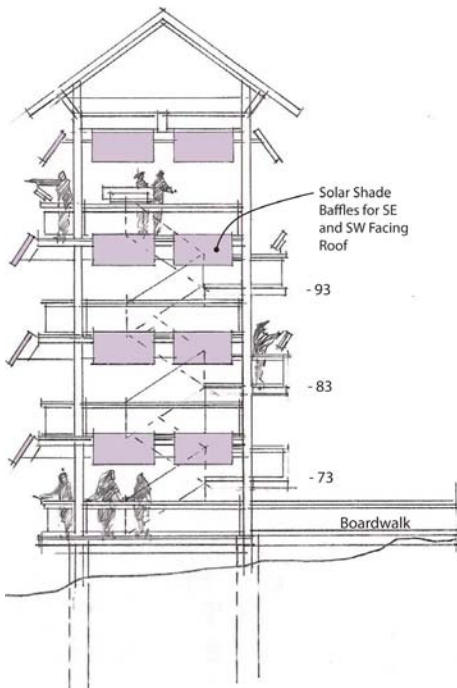
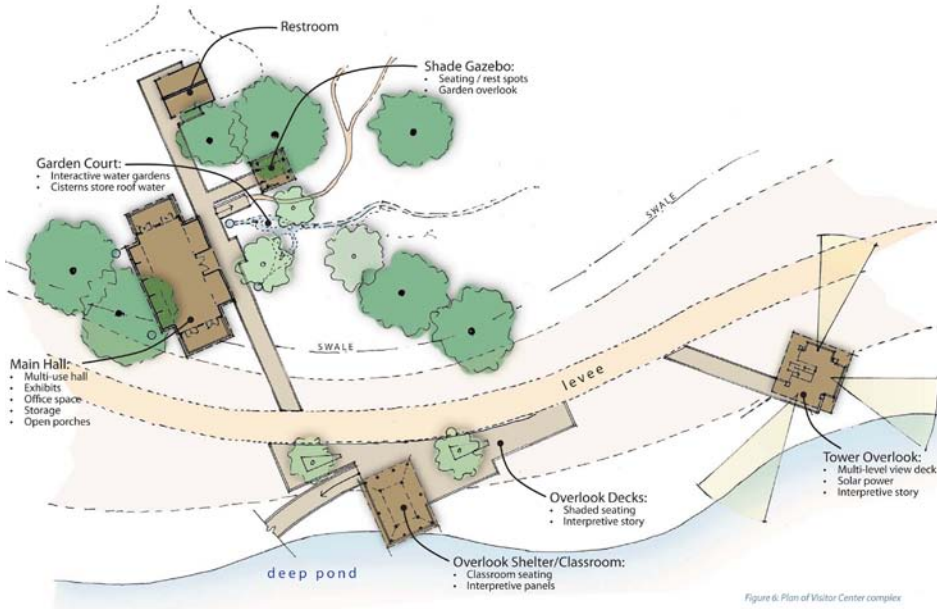




PAYNES PRAIRIE PRESERVE PUBLIC USE CONCEPT PLAN

GAINESVILLE, FLORIDA

GAINESVILLE REGIONAL UTILITIES AND THE CITY OF GAINESVILLE



A constructed wetland is being installed to treat wastewater and to help restore a wet prairie within this 21,000-acre prairie preserve at the southern edge of Gainesville, Florida. Jones & Jones developed concepts for public access and education on the project's importance to the prairie ecosystem.

Our plan includes a trail network and viewing tower to tell the story of the water treatment and its benefits as well as trail linkages to outdoor recreation. All structures, trails and human interventions will sit lightly in the landscape, and communicate to visitors the wild nature of the Paynes Prairie ecosystem, particularly the Florida alligator.

By making the prairie ecosystem water process visible to the adjacent community of Gainesville, the project will help build support for clean water and habitat conservation.

FACTS

Tertiary treatment of wastewater from the city
Enhanced habitat for myriad birds, amphibians, reptiles and mammals

BENEFITS

Public awareness of urban/natural interface
Opportunities for healthy living outdoors
Interpretation of north Florida water use
Alligators showcased as indicator species for wetland health

JONES & JONES

ARCHITECTS
LANDSCAPE ARCHITECTS
PLANNERS