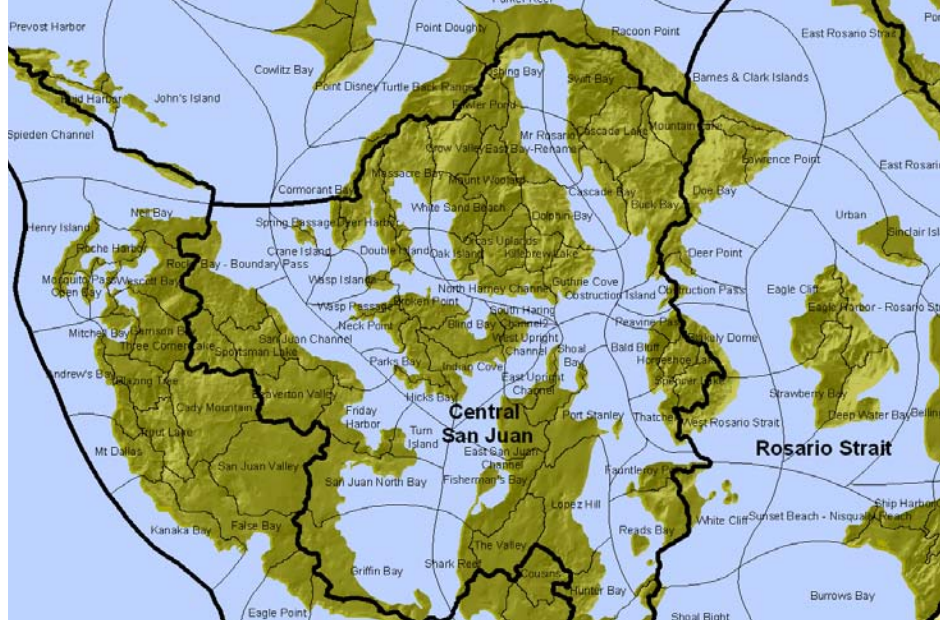
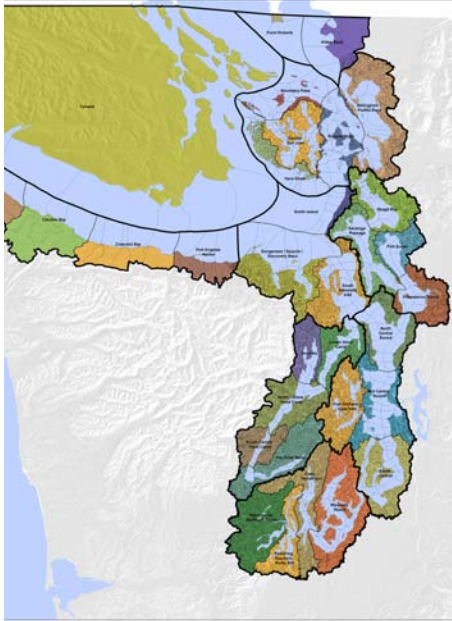




A SPATIAL FRAMEWORK FOR PUGET SOUND

THE PUGET SOUND WATERSHED, WESTERN WASHINGTON

THE PUGET SOUND ESTUARY



As a contribution to cooperative regional planning, Jones & Jones mapped the near-shore basins of the Puget Sound Estuary and cataloged their intrinsic resources.

The Puget Sound Plan launched ILARIS, an open-source, GIS decision support tool for communities to set priorities for action to protect the land and water in their sub-basins.

The Puget Sound Plan shows the Puget Sound Estuary to be an organism comprised of several major river systems. Jones & Jones mapped and named the spatial frameworks of the more than 1,000 near-shore basins that make up the shoreline of the estuary. We then identified near-shore basins of exceptional intrinsic significance.

This body of work helped the Trust for Public Land launch their Greenprint for Puget Sound. Jones & Jones has also been commissioned by the Puget Sound Partnership to help form its Action Agenda—to be issued in 2008—by managing working groups devoted to land use and habitat as well as quality of life and human well-being.

JONES & JONES

ARCHITECTS
LANDSCAPE ARCHITECTS
PLANNERS